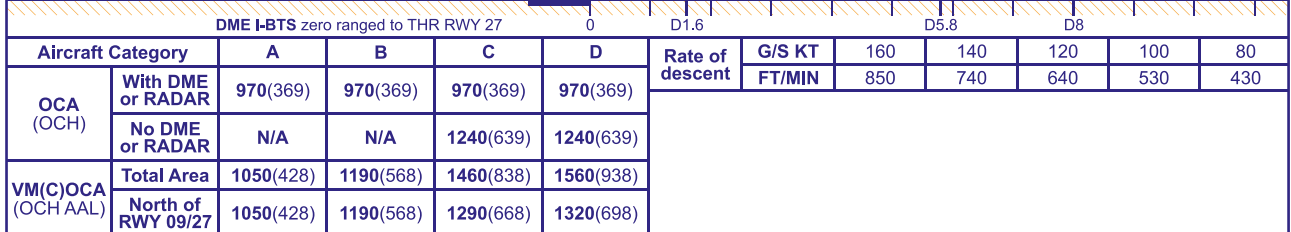
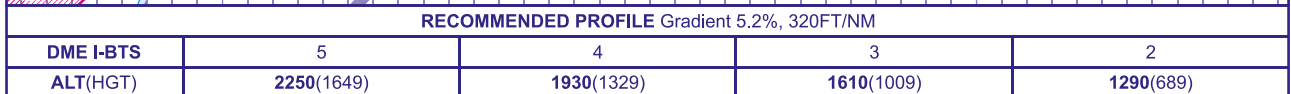


BRISTOL
NDB(L)/DME
RWY 27
(ACFT CAT A,B,C,D)



ALTERNATIVE TIMED PROCEDURE CAT C and D aircraft may, in the absence of either DME I-BTS or radar ranges, fly outbound on baseturn procedure for 2MIN 30SEC. (Note: timed procedure **not available** for CAT A or B aircraft).

NOTES 1 Lowest altitude to commence procedure from hold is **2500**.
2 Maximum KIAS for procedure is 110KIAS (CAT A); 140KIAS (CAT B); 185KIAS (CAT C,D).
3 FAT offset 3.8° from RWY C/L and crosses the extended RWY 27 C/L, 1NM from the THR (I-BTS D1.7).
4 ATC unable to provide Radar Ranges when operating SSR only.

CHANGE (5/25): SPECIFICATION CHANGE.